

VMware

EXAM - VCP510

VMware Certified Professional 5 - Data Center Virtualization

Buy Full Product

<http://www.examskey.com/VCP510.html>

Examskey VMware VCP510 exam demo product is here for you to test the quality of the product. This VMware VCP510 demo also ensures that we have this product ready unlike most companies, which arrange the product for you as you order. These VCP510 exam questions are prepared by VMware subject matter specialists. Hence these are most accurate version of the VCP510 exam questions that you can get in the market.

We also offer bundle discount packages for every VMware certification track, so you can buy all related exam questions in one convenient bundle. And for corporate clients we also offer bundles for VMware certification exams at huge discount.

Check out our [VCP510 Exam Page](#) and [VMware Certification Page](#) for more details of these bundle packages.

Question: 1

Under which two conditions is a master elected by vSphere HA? (Choose two.)

- A. When any cluster is created
- B. When a host is placed into maintenance mode
- C. When the datastore configuration changes
- D. When "Reconfigure for vSphere HA" is executed

Answer: B, D

Question: 2

A virtual machine failure occurs in a vSphere HA cluster, but the VM is not restarted. No error messages are given. Which two conditions would explain this behavior? (Choose two.)

- A. Monitoring sensitivity was set to Low.
- B. Application Monitoring Only was selected.
- C. The virtual machine has failed three times.
- D. The HA cluster was set up with all defaults.

Answer: C, D

Question: 3

An administrator is configuring a stretched HA cluster. The administrator wishes to restrict the failover of VMs to certain hosts within a given site. Which additional vSphere feature satisfies this requirement?

- A. vSphere Distributed Switch
- B. Distributed Resource Scheduler
- C. Datastore Clusters
- D. Host Folders

Answer: B

Question: 4

What are three use cases for vSphere Fault Tolerance? (Choose three.)

- A. Provide guaranteed up-time for a RDM enabled virtual machine
- B. Provide efficient scheduled reliability for a payroll virtual machine
- C. Provide guaranteed reliability for a development virtual machine with scheduled snapshots
- D. Provide guaranteed reliability for a legacy Windows NT virtual machine
- E. Ensure up-time for a Linux virtual machine without making any changes to the OS

Answer: B, D, E

Question: 5

Which two vSphere features can be used with virtual machines that are enabled for VMware Fault Tolerance? (Choose two.)

- A. EVC
- B. Storage vMotion
- C. RDMs in virtual compatibility mode
- D. VMware Virtual SMP

Answer: A, C

Question: 6

ACME Anvil Incorporated has several departments which each have unique resource requirements in their environment.

1. The Manufacturing department has ten production virtual machines.
2. The Development department has two test/dev virtual machines.
3. The Manufacturing virtual machines have only CPU reservations.
4. No Development virtual machine should be able to use more resources than any Manufacturing virtual machine requests.
5. Manufacturing department virtual machines must always be able to power on.

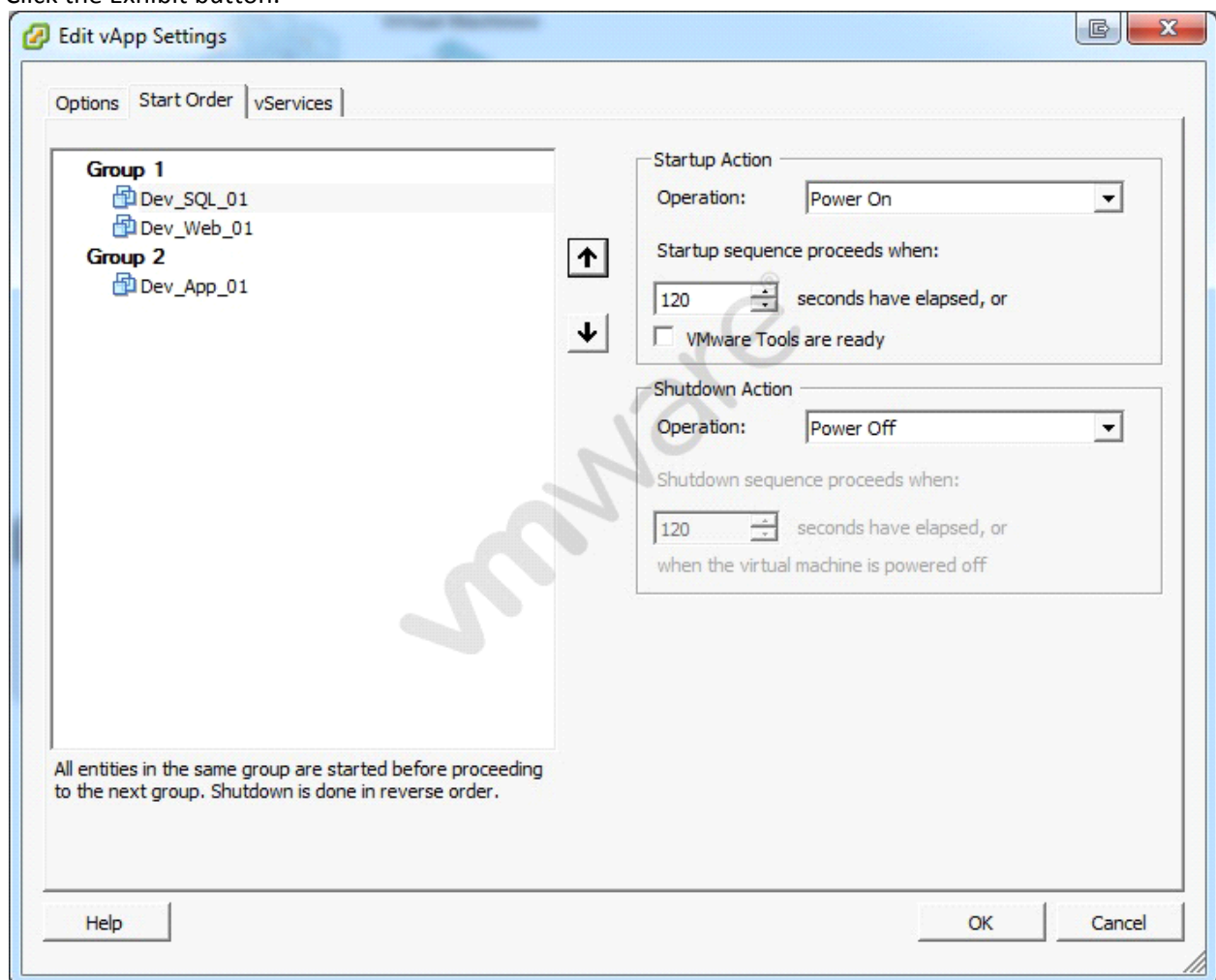
Resource Pools will be used to address these requirements. When creating the "Manufacturing" and "Development" pools, which settings should be part of the configuration to meet the stated requirements? (Choose two.)

- A. Enable Expandable Reservation on Memory Resources on the Manufacturing pool
- B. Set a reservation for CPU Resources on the Manufacturing resource pool
- C. Create a required Group Rule to ensure Development virtual machines always run on the Development host
- D. Ensure the shares set on the Manufacturing pool are at least five times the shares set on the Development pool

Answer: B, D

Question: 7

Click the Exhibit button.



An administrator is creating a vApp for a multi-tiered web application. The vApp has been configured as shown in the exhibit. Testing of the vApp indicates that attempts to communicate with the web server on Dev_Web_01 fail. The developer wants to be sure the database server OS is completely started before the other servers power on. The developer also wants to minimize recovery time. What changes to the vApp configuration will correct the issues?

- A. Move the Dev_Web_01 virtual machine to Group 3 and increase the time value
- B. Move the Dev_App_01 virtual machine to Group 1 and increase the time value
- C. Move the Dev_Web_01 virtual machine to Group 3, decrease the time value and check VMware Tools are ready
- D. Move the Dev_Web_01 virtual machine to Group 3, increase the time value and check VMware Tools are ready

Answer: D

Question: 8

Click the Exhibit button.

The screenshot shows the vSphere5Cluster Resource Allocation window and the Edit Settings window for the Production Pool.

Resource Allocation Table:

Name	Reservation - MHz	Limit - MHz	Shares	Shares Value	% Shares	Worst Case
Production Pool	0	500	Normal	4000	25	
Development Pool	1000	Unlimited	Normal	4000	25	
Testing Pool	2000	Unlimited	Normal	4000	25	

Production Pool Edit Settings:

- Name: Production Pool
- CPU Resources:
 - Shares: Normal (4000)
 - Reservation: 0 MHz
 - Limit: 500 MHz
 - Expandable Reservation:
 - Unlimited:
- Memory Resources:
 - Shares: Normal (16384)
 - Reservation: 0 MB
 - Limit: 14345 MB
 - Expandable Reservation:
 - Unlimited:

PROD-SQL-01 - Virtual Machine Properties:

- Resource Allocation:
 - Shares: Normal (1000)
 - Reservation: 0 MHz
 - Limit: 11469 MHz
 - Unlimited:

Several virtual machines residing in the Production pool are exhibiting poor performance, and a critical virtual machine in the pool appears hung. What step can be taken to increase the performance of the critical virtual machine?

- A. Increase the CPU limit on the critical virtual machine.
- B. Increase the CPU shares on the critical virtual machine.
- C. Increase the CPU reservations on the resource pool.

D. Increase the CPU limit on the resource pool.

Answer: D

Question: 9

An administrator has just finished deploying a vApp for a web service. What three options are available to the administrator for IP allocation within the vApp? (Choose three.)

- A. Transient
- B. Fixed
- C. DHCP
- D. Bridged
- E. NAT

Answer: A, B, C

Question: 10

An administrator is working to implement Storage Profiles in their environment. Which two ways can storage capabilities be generated? (Choose two.)

- A. They are generated by Datastore Clusters as LUNs are added to the cluster.
- B. They are automatically determined by the Storage Profile when it is created.
- C. They can be retrieved from the array through the VMware APIs for Storage Awareness (VASA).
- D. They can be manually generated by the administrator.

Answer: C, D

Question: 11

Which VMware solution uses the security of a vSphere implementation and provides linked-clone technology to virtual desktops?

- A. VMware ACE

- B. VMware View
- C. VMware Workstation
- D. VMware ThinApp

Answer: B

Question: 12

Which two conditions will prevent a virtual machine from being successfully migrated using Storage vMotion? (Choose two.)

- A. The virtual machine has an RDM.
- B. The virtual machine has Fault Tolerance enabled.
- C. The virtual machine is running on a vSphere 5.x Standard host.
- D. The virtual machine has a disk stored on an NFS datastore.

Answer: B, C

Question: 13

Under which two conditions can vStorage APIs for Array Integration (VAAI) provide a performance benefit? (Choose two.)

- A. When a virtual disk has VMDK files stored on an NFS datastore.
- B. When a virtual disk is created using the New Virtual Machine wizard.
- C. When cloning a virtual machine with snapshots.
- D. When a virtual disk is deleted.

Answer: A, D

Question: 14

An administrator is enabling Enhanced vMotion Compatibility (EVC) in a DRS cluster. The administrator wants only hosts with the newest Intel processors added to the cluster. Which setting satisfies this requirement?

- A. The baseline with the most CPUs listed
- B. The baseline with the fewest CPUs listed
- C. Any baseline that contains Future Intel processors
- D. Create a new baseline and add only the latest processor family

Answer: D

Question: 15

Which two conditions must exist on all hosts in the cluster if Enhanced vMotion Compatibility (EVC) is used? (Choose two.)

- A. The cluster must be enabled for DRS.
- B. All hosts in the cluster must be running ESX/ESXi 3.5 Update 2 or later.
- C. All hosts in the cluster must have hardware virtualization support enabled.
- D. The cluster must be enabled for HA.

Answer: B, C

Question: 16

Users are experiencing performance issues when updating their database hosted on a virtual machine. The administrator determines that disk I/O is high across one of the HBAs on the ESXi host containing the virtual machine. What is the action will most likely correct the issue without significantly impacting other users or datastores?

- A. Manually configure the disk multipathing policy to Round Robin for the datastore
- B. Migrate the virtual machine to an NFS datastore using Storage vMotion
- C. Use Storage vMotion to migrate the virtual machine to a new VMFS5 datastore
- D. Map additional LUNs to the ESXi host and extend the datastores

Answer: A

Question: 17

An administrator takes a vSphere snapshot of a virtual machine and applies an OS update. After confirming the update the administrator cannot enable Fault Tolerance on the virtual machine and suspects there are snapshots that have not been consolidated. Which two operations can the administrator perform to verify consolidation is needed? (Choose two.)

- A. Expose the Needs Consolidation column in the virtual machines tab of the host.
- B. Browse the datastore containing the vmdk files and look for files with the "-delta.vmdk" extension.
- C. Expose the Needs Consolidation column in the virtual machine summary tab.
- D. Select and run the vSphere Cluster HealthCheck from the right-click menu of the cluster object.

Answer: A, B

Question: 18

An administrator has created a virtual machine that will be accessed from a public kiosk. Management has requested that the virtual machine be reset to a known state once a week or on demand if requested. Which method is the simplest way to meet this requirement?

- A. Configure the storage array to be vSphere aware and script routine array snapshot restores of the datastore.
- B. Implement a 3rd party imaging server and PXE boot the virtual machine off a static image.
- C. Set the VMDKs of the virtual machine to be Independent-Nonpersistent and schedule restarts of the virtual machine.
- D. Create Nonpersistent disks for the virtual machine and set the guest OS to reboot once a week.

Answer: C

THANKS FOR TRYING THE DEMO OF OUR PRODUCT

Visit Our Site to Purchase the Full Set of Actual VCP510 Exam Questions With Answers.

<http://www.examskey.com/VCP510.html>

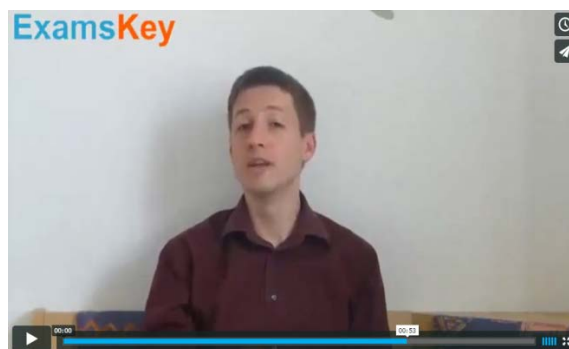
We Also Provide Practice Exam Software That Simulates Real Exam Environment And Has Many Self-Assessment Features. Download Free Product Demo From:

<http://www.examskey.com/VCP510.html>

Money Back Guarantee



Check Out Our Customer Testimonials



<http://vimeo.com/102521210>